

Environmental Standard Operating Procedures (ESOP)	
Abatement (ABA)	
Environmental Affairs (EA): Abatement Chief (760)830-7244	Revised: 1 October 2023

Subj: ABATEMENT

Ref: (a) CCO 5090.5D, Integrated Contingency and Operations Plan

1. Purpose. This document provides environmental protection guidelines for abatement procedures.

2. Application. This guidance applies to those individuals who are involved in the process of identifying a hazardous material spill and who are trained to clean up and remediate hazardous material spills aboard Marine Air Ground Task Force Training Command (MAGTFTC), Marine Corps Air Ground Combat Center (MCAGCC) Twentynine Palms. For further references to MAGTFTC, MCAGCC in this document, the term installation will be used.

3. Procedures. Abatement procedures on base require that spills be cleaned up immediately with immediate notification to Environmental Affairs (EA), Division. All required notifications outside of the installation will be made by EA staff only. All spills will be handled according to specific clean up and notification procedures, depending on where the spill occurred on the installation (i.e., sensitive areas, main-side, Camp Wilson, and all other training areas).

4. Operational Controls. The following controls apply:

a. Follow all spill response procedures as outlined in attachments. (See attachments)

b. Ensure all waste generated from spills is turned in within 72 hours.

c. Post a copy of the "Spill Response Flow Chart" in common areas to include turnover folders, duty binders, and other official areas.

d. If there are any specific situations or other concerns not addressed by this document, contact EA.

e. All generators, lighting systems and refueling trucks (FRC, SIX cons, etc.) must be placed within a secondary containment. FRC's and SIX cons are not to be stored on bare ground or pop-up containments. Concrete containments are authorized for storage of empty FRC's / SIX con.

f. Review the following ESOP's: Hazardous Material Storage and Used Oil/Antifreeze.

5. Documentation and Record Keeping. There is no required record keeping for this ESOP.

Subj: ABATEMENT

6. Training. All affected personnel must be trained in this document and the following:

General Environmental Awareness training.

7. Emergency Preparedness and Response Procedures. Refer to reference (a) and the spill response procedures listed in this ESOP.

8. Inspection and Corrective Action. There are no inspection requirements for this ESOP.

SPILL RESPONSE PROCEDURES

CONTACTS:

LARGE SPILLS - 55 GALLONS OR MORE

1. Base phones "911"; Cell Phones 830-3333
2. Environmental Affairs (EA) Division, Abatement Chief: 760-401-9841

SMALL SPILLS - LESS THAN 55 GALLONS

1. Unit ECC _____
2. EA Abatement Chief: 760-401-9841

SMALL OR LARGE SPILLS: *UNSAFE CONDITIONS*

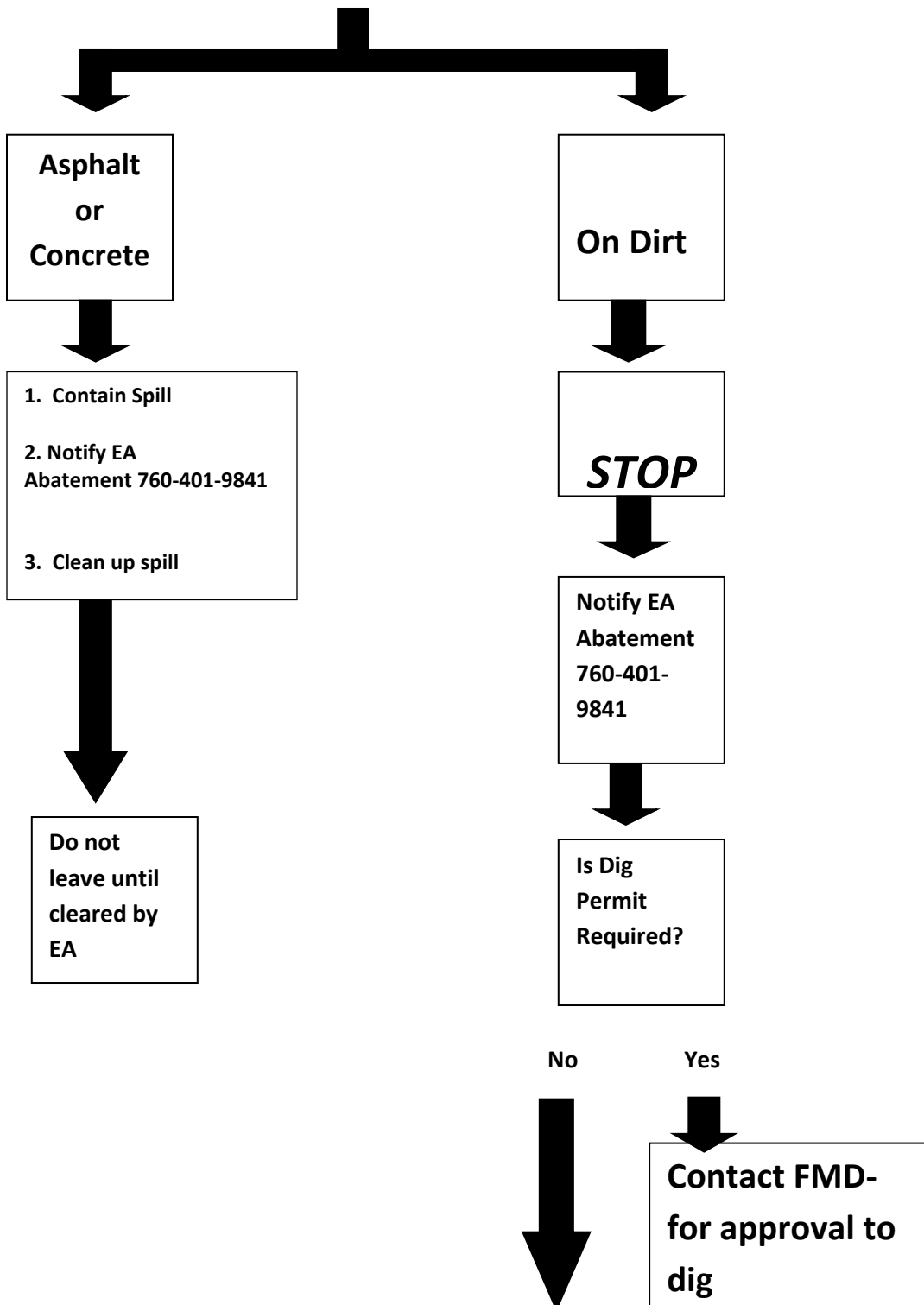
1. Keep Calm- Don't panic- Don't be a Hero
2. Restrict sources of ignition
3. Restrict access to area
4. Do not touch or walk through spilled material
5. Initiate Notification Process
6. Provide follow-up information to responders upon their arrival

SMALL OR LARGE SPILLS: *SAFE CONDITIONS*

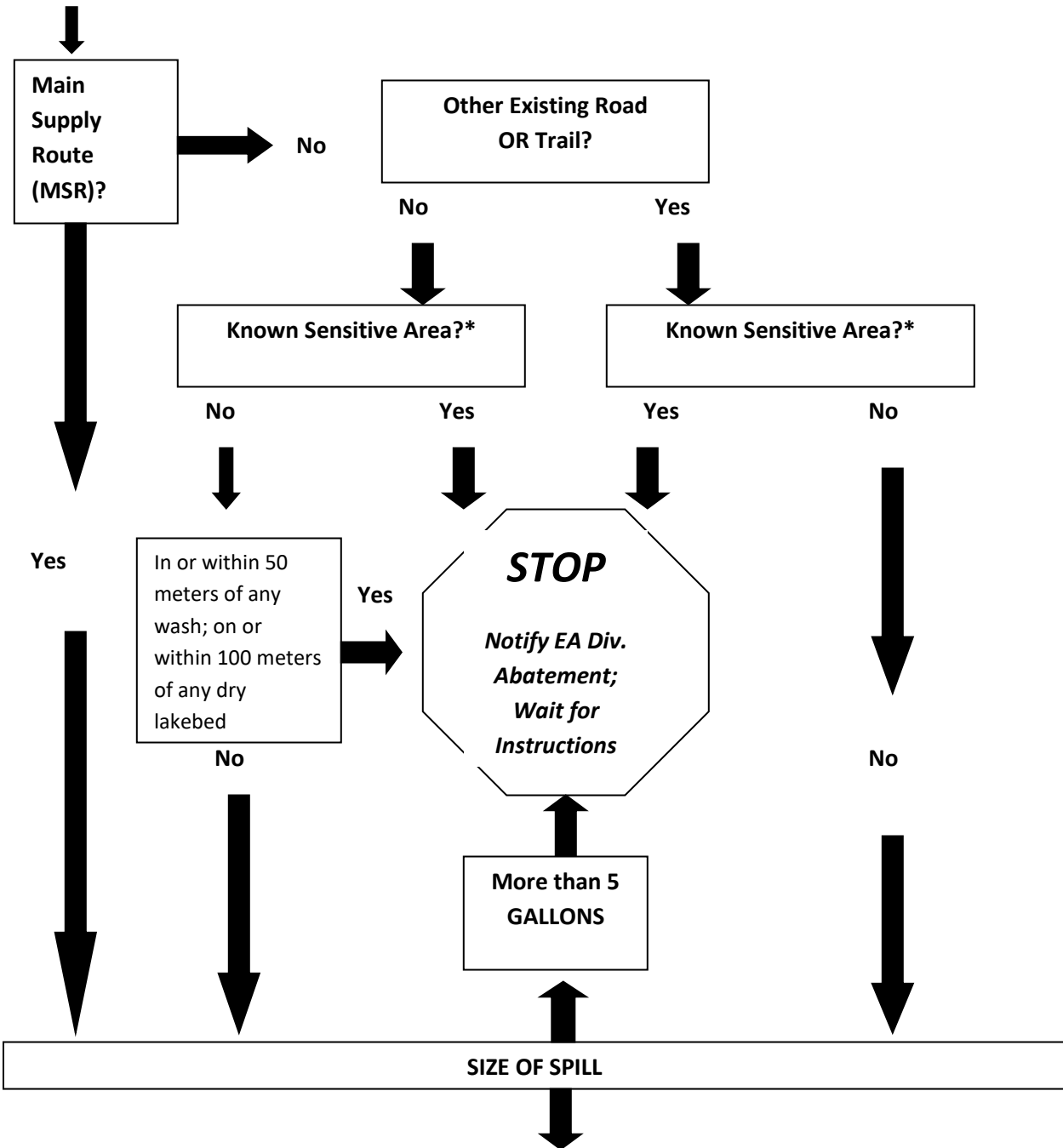
(NO IMMEDIATE FIRE HAZARD OR THREAT TO HUMAN HEALTH OR THE ENVIRONMENT)

1. Eliminate sources of ignition (No smoking, Flares, Sparks, or flames in immediate area)
2. Restrict access to area
3. Do not touch or walk through spilled material
4. IF SAFE, and with proper PERSONAL PROTECTIVE EQUIPMENT, stop the release and contain it
5. Prevent entry of hazardous material into waterways, sewers, or confined areas
6. Absorb or cover with dry earth, sand, or other non-combustible material
7. Use clean non-sparking tools to collect absorbed material
8. Use intrinsically safe grounded equipment when handling the hazardous material

IF A SPILL OCCURS ON "MAINSIDE" and Camp Wilson.



IF SPILL OCCURS IN "Training Areas" CONTACT
BEARMAT 760-830-6535, or Cellphone: 760-830-3333/3334



**5 GALLONS OR LESS; contact EA Abatement:
 760-401-9841-"DIG" Do not leave until cleared by EA**

* SENSITIVE AREAS: Restricted area, Sand Hill TA, Foxtrot Petroglyphs, any area shown in Blue, Green, or Red on Base Map