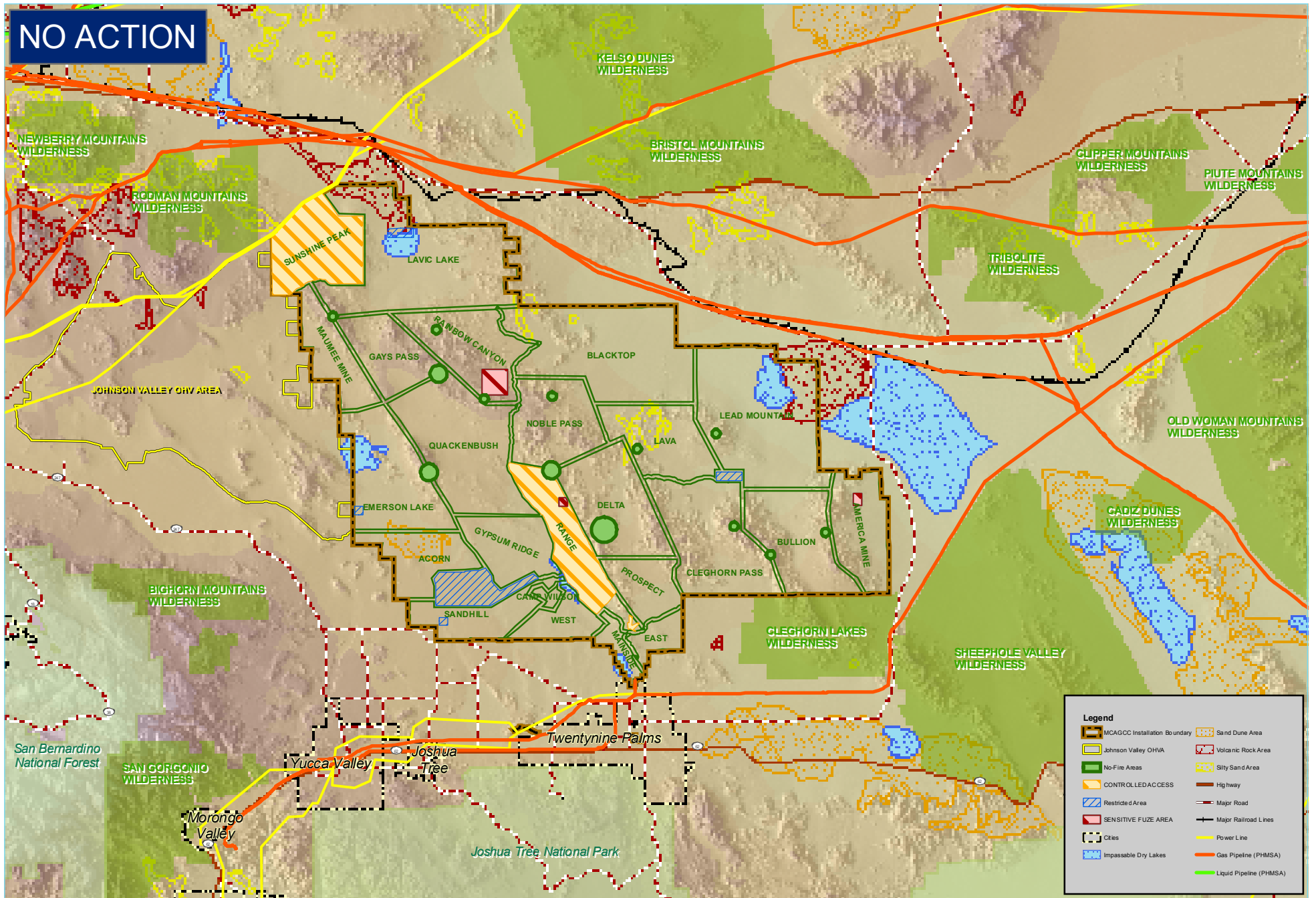


Proposed 29 Palms Training Land/Airspace Acquisition Project (as of 06 May 2010)

NO ACTION



Legend

- MCAGCC Installation Boundary
- Johnson Valley OHVA
- No-Fire Areas
- Restricted Area
- SENSITIVE FUZE AREA
- Cities
- Impassable Dry Lakes
- Sand Dune Area
- Volcanic Rock Area
- Silty Sand Area
- CONTROLLED ACCESS
- Hg way
- Majr Road
- Majr Railroad Lines
- Power Line
- Gas Pipeline (PHMSA)
- Liquid Pipeline (PHMSA)

